



PETITJEAN

FIXED EQUIPMENT RECTANGULAR PLATFORMS

DESCRIPTION | DECISIVE ADVANTAGES



It is necessary to have a platform to ensure the floodlights maintenance if the mast is equipped with a quantity of 4 to 24 floodlights.

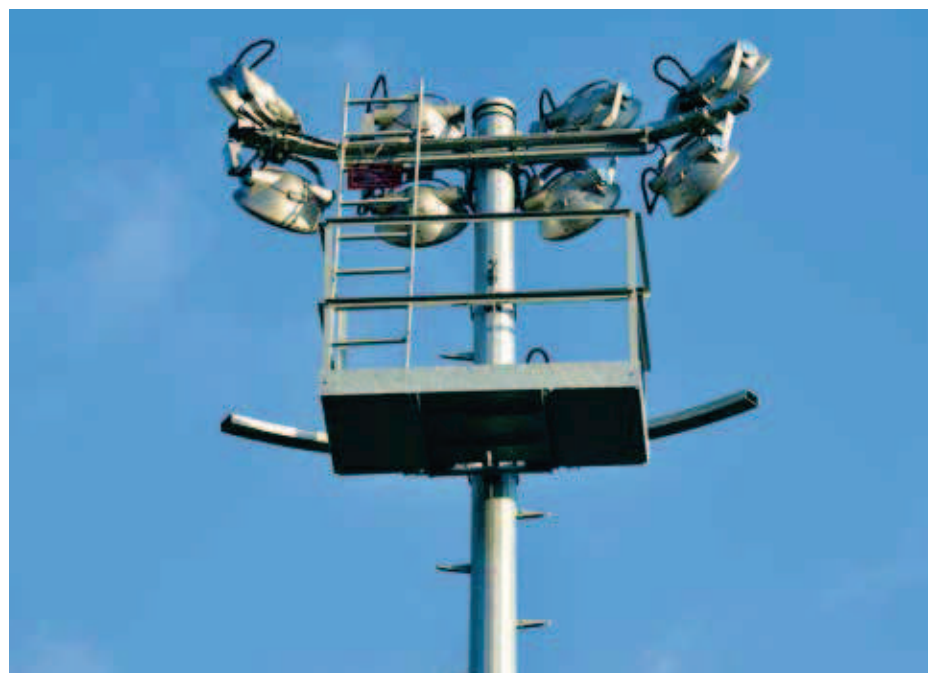
The platform is fixed with u-bolts at the rear of the mast (independently of the crossarms).

Two persons can safely get on the platform by an access trap located into the platform floor.

When the mast is equipped with two crossarms, a ladder allows to reach the top row of floodlights.

Only the PDF15 platform equipped with one crossarm can be mounted on a middle range mast (\varnothing top = 114 mm mini). All others configurations have to be mounted on high masts (\varnothing top head = 160 to 258 mm).

Platforms can be supplied assembled or non-assembled to optimise the transport.



RANGE | CHARACTERISTICS



Many configurations are possible with the following elements :

- **Platforms:**

PFD15 model (1.5m length, 0.8m width, 70kg weight) or PFD30 model (3m length, 0.8m width, 200kg weight)

- **Crossarms:**

TB1550-2 (straight crossarm, 24kg weight), 3000 (curved crossarm, 32kg weight) or 4800 (bent crossarm, 49kg weight)

- **Ladder:**

2.7m height (30kg weight for PDF15 platform and 64kg weight for PFD30 model)

Based on these elements, there are 7 different possible configurations:



PFD15 - one 1550 crossarm
4 floodlights maxi



PFD15 - one 3000 curved
crossarm - 8 floodlights maxi



PFD15 - two 3000 curved crossarms
2.7m ladder- distance between
rows 2m- 12 floodlights maxi



PFD15 - two 3000 curved crossarms
2.7m ladder- distance between rows
1.6m - 16 floodlights maxi



PFD30 - one 4800 bent
crossarm - 12 floodlights maxi



PFD30 - two 4800 bent crossarms
2.7m ladder - distance between rows
2m - 18 floodlights maxi



PFD30 - two 4800 bent crossarms
2.7m ladder - distance between rows
1.6m - 24 floodlights maxi

Electricity cables come out either from a head cap (4 or 8 cable gland models) or either from Ø 101 mm steel tubes on crossarm level.



REAR LIGHTING

The PFD15 platform may be reinforced in order to add a 3000 curved crossarm, allowing rear lighting with 6 extra floodlights.

COMPLIANCE

Our platforms are in compliance with NFE85014 standards (industrial equipment elements, work platforms)