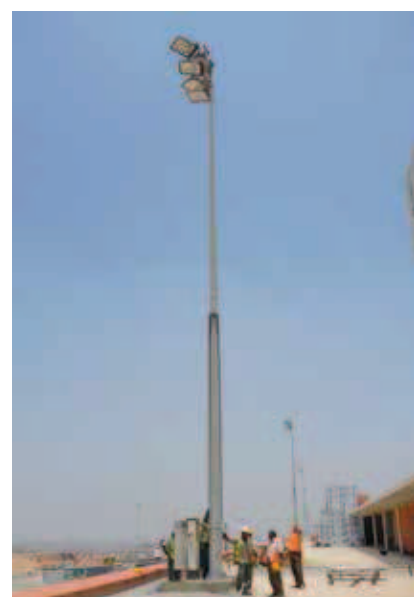
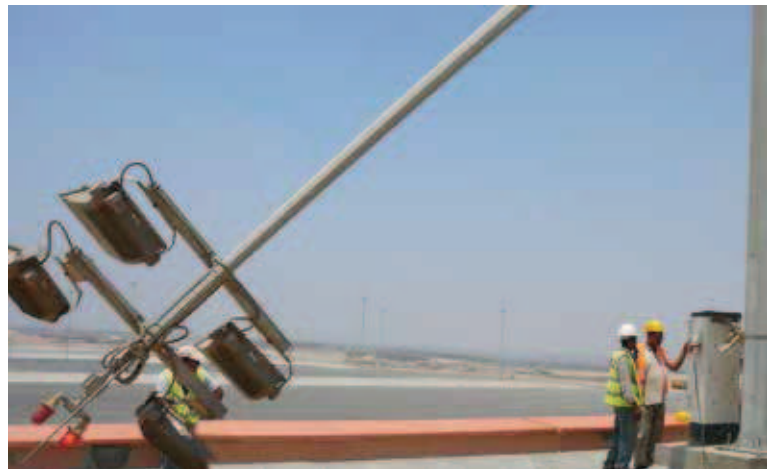


# MID-HINGED MASTS



Manœuvre d'un mât basculant

The principle of hinging enables to bring the equipment mounted on the mast-head down to human height. Hinged masts are a must in areas where lifting devices cannot access (railways and sport fields for example).

It is also recommended on sloping ground or for installations where intervention is frequently necessary.

Each mast has a fixed base and a upper top part hingeable at mid-level.

The articulation is designed in order to avoid water infiltration and protect the cables during the tilting operations.

The range complies with EN40 and CTICM standards.

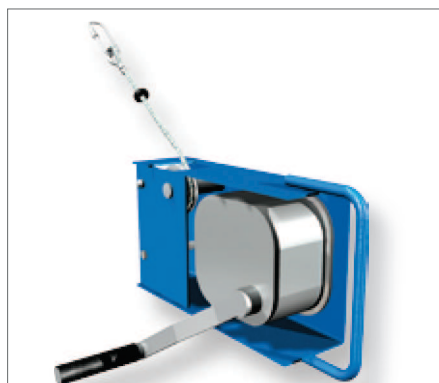
## RANGE | CHARACTERISTICS

DESCRIPTION	HEIGHT (m)	DIAMETER (mm)		IMPLANTATION		MAXIMUM TOTAL TOP WEIGHT (kg)	
		BOTTOM	TOP	DISTANCE BETWEEN HOLES / DRILLING DIAMETER	ANCHOR BOLTS	MECHANICAL WINCH	ELECTRICAL WINCH
BMTRC100	10	267	89	300	J 20/18x400	120	166
BMTRC120	12	256	89	300	J 25/24x600	129	180
BMTRC140	14	256	89	300	J 25/24x600	92	133
BMTxP150	15	342	150	Ø 430	12 x D 25/24x820	121	165
BMTxP160	16	342	137	Ø 430	12 x D 25/24x820	100	141
BMTxP180	18	368	137	Ø 450	12 x D 25/24x820	176	227
BMTxP180	18	342	110	Ø 430	12 x D 25/24x820	71	106
BMTxP200	20	368	110	Ø 450	12 x D 25/24x820	137	182
BMTxP200	20	395	137	Ø 470	12 x D 25/24x820	174	224
BMTxP220	22	462	162	Ø 550	16 x D 25/24x820	180	229
BMTxP230	23	504	190	Ø 590	20 x D 25/24x820	183	232
BMTxP250	25	504	162	Ø 590	20 x D 25/24x820	145	190



Rope Pulley

The tilting manoeuvre may be carried out by a single person.



Mechanical winch

20kg – rolling speed : 1.5 to 2m/ min  
Ø4.8 mm useful length 20m.



Electrical Winch

30kg – winch with electrical disc-brake in case of power shutdown (230-240V – 3 phases – 0.37kW)